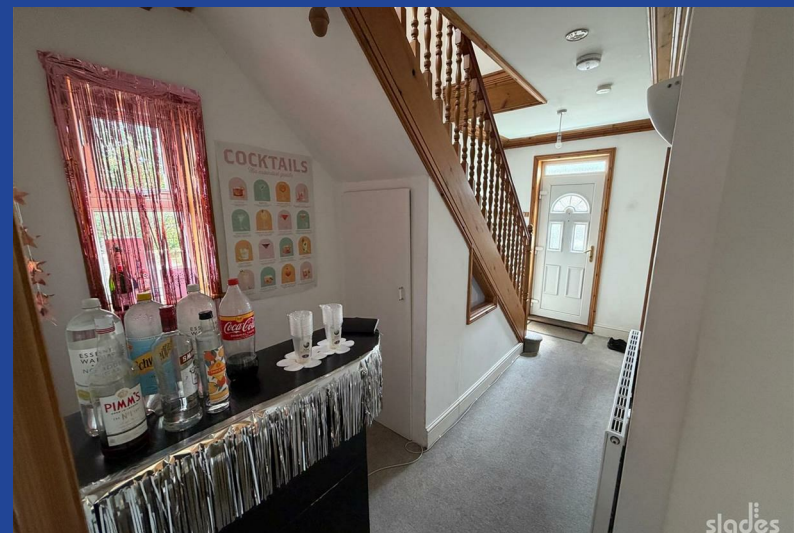




## 4A Ridley Road

Winton, Bournemouth, BH9 1LB

Offers In The Region Of £375,000



## Road Map



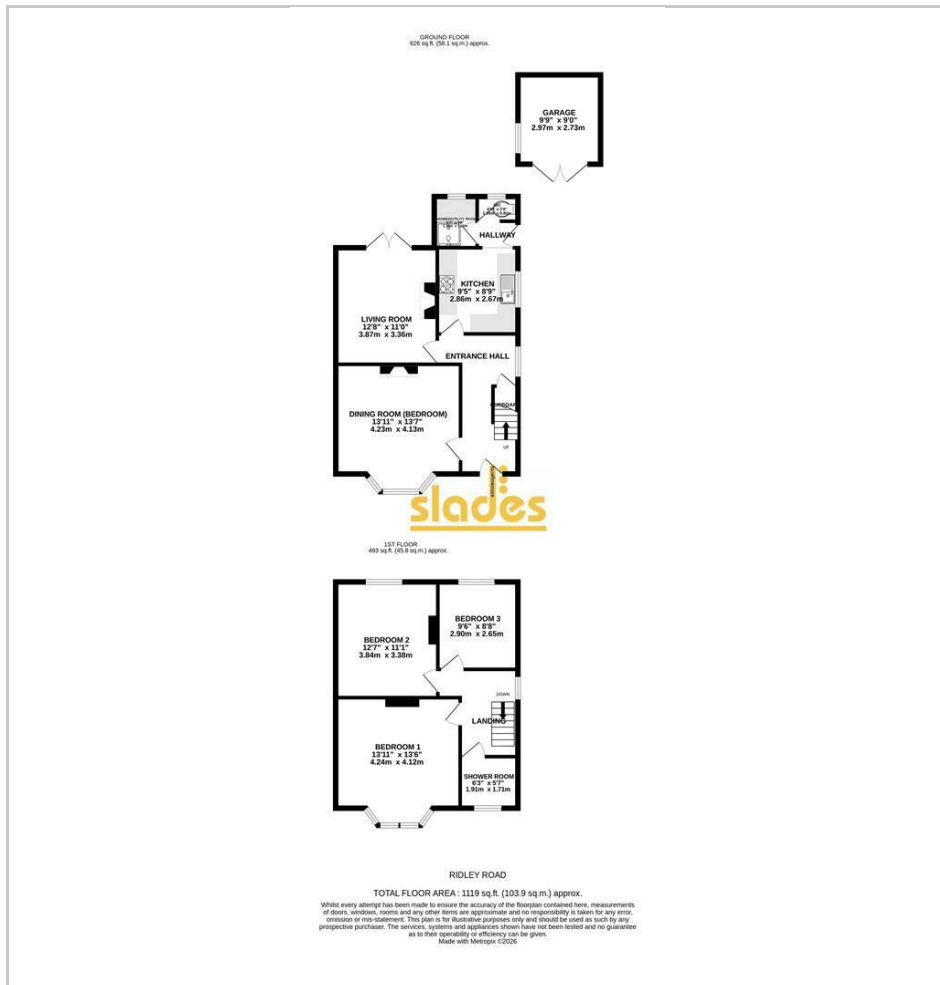
## Hybrid Map



## Terrain Map



## Floor Plan



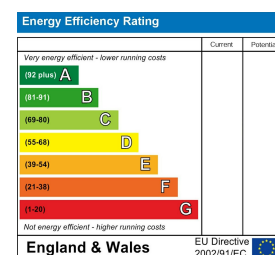
- DETACHED HOME
- GENEROUS PLOT
- CENTRAL WINTON LOCATION
- 2 GOOD RECEPTION ROOMS
- KITCHEN/ UTILITY & GROUND FLOOR SHOWER ROOM
- 3 GOOD SIZED BEDROOMS
- SHOWER ROOM
- uPVC DOUBLE GLAZING & GAS CENTRAL HEATING
- GARAGE
- NO CHAIN

## Viewing

Please contact our Slades Estate Agents Office on 01202548855 if you wish to arrange a viewing appointment for this property or require further information.



## Energy Efficiency Graph



These particulars, whilst believed to be accurate are set out as a general outline only for guidance and do not constitute any part of an offer or contract. Intending purchasers should not rely on them as statements of representation of fact, but must satisfy themselves by inspection or otherwise as to their accuracy. No person in this firm's employment has the authority to make or give any representation or warranty in respect of the property.

301 Wimborne Road, Bournemouth, BH9 2AA  
Tel: 01202548855 Email: [info@sladesproperty.co.uk](mailto:info@sladesproperty.co.uk) <https://www.sladesproperty.co.uk>

**A spacious 3 double bedroom detached family home in central Winton. Good sized plot with driveway and detached garage. NO CHAIN, viewing recommended.**



The accommodation with approximate room sizes comprises of a panel glazed uPVC entrance door leading to the ENTRANCE HALL with deep moulded ceiling cornice, pendant and wall lighting. Convection radiator, wall thermostat for central heating and uPVC double glazed window to the side elevation. Useful understairs storage cupboard, low level cabinet housing the electricity meter and doors to

#### LIVING ROOM

with coved ceiling and central pendant light, convection radiator, decorative wooden fireplace surround with feature insert, gas fire and tiled hearth. uPVC double glazed casement doors leading out on to the decking and lawned garden beyond.

#### KITCHEN

with panelled ceiling and inset LED spotlights, convection radiator and uPVC double glazed window to the side elevation. Extensive range of matching wall and base level cabinets with rolled edge working surfaces and tiled splashbacks incorporating a single circular stainless steel sink with drainer, four burner gas hob with integrated extractor hood over and fitted under counter oven. Space and plumbing for washing machine, space for freestanding full height fridge freezer and wall hung 'Baxi' combination boiler. Archway through to

#### REAR LOBBY

with pendant light and frosted glazed uPVC door to the side driveway and further doors to

#### GROUND FLOOR SHOWER ROOM / UTILITY ROOM

with inset LED spotlights, fully tiled walls and

convection radiator and frosted glazed uPVC window to the rear elevation. Glazed shower cubicle with thermostatically controlled shower valve and space and plumbing for washing machine. Ceramic tiled floor.

#### SEPARATE WC

WC with ceiling light, fully tiled walls, convection radiator and frosted glazed uPVC window to the rear elevation. A white suite comprising of a wall hung hand wash basin with chrome taps and close couple WC.

#### DINING ROOM

(currently a bedroom) with deep moulded ceiling cornice and central pendant light. Convection radiator and uPVC double glazed bay window to the front elevation.

Stairs to the bright and spacious FIRST FLOOR LANDING with deep moulded ceiling cornice, pendant light, smoke alarm and access to loft space. uPVC double glazed window to the side elevation. Convection radiator. Doors to

#### BEDROOM ONE

having a coved ceiling and central pendant light, convection radiator and uPVC double glazed bay window to the front elevation.

#### BEDROOM TWO

with coved ceiling and central pendant light, convection radiator, uPVC double glazed window overlooking the rear garden and full height cupboard built within chimney recess.

### BEDROOM THREE

with coved ceiling and central pendant light, convection radiator, uPVC double glazed window overlooking the rear garden and laminate flooring.

### SHOWER ROOM

with LED light fitting, extractor unit and frosted glazed uPVC window to the front elevation. White suite comprising of a close couple WC with dual central flush, pedestal wash hand basin with chrome monoblock tap and tiled splashback. Glazed shower enclosure with thermostatically controlled shower valve. Chrome heated towel rail.

### OUTSIDE

the property benefits from a small front garden area together with a good width driveway providing access alongside the property through a pair of timber screening gates to the rear.

To the rear of the property there is a DETACHED brick built GARAGE with wooden doors. The rear garden there is a good sized decking area immediately abutting the living room whilst the remainder of the garden is predominately lawn and fully enclosed by close board and panel fencing.

### TENURE

we understand the property is freehold



